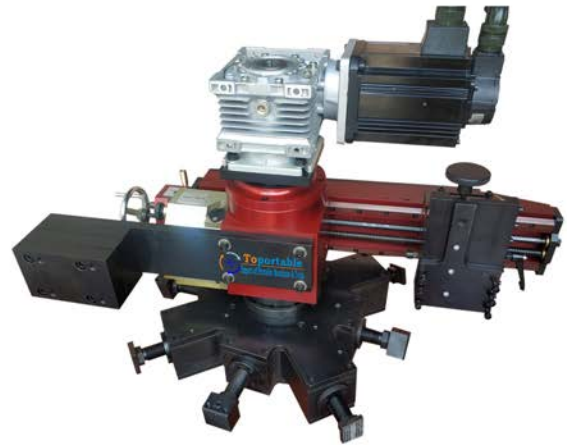


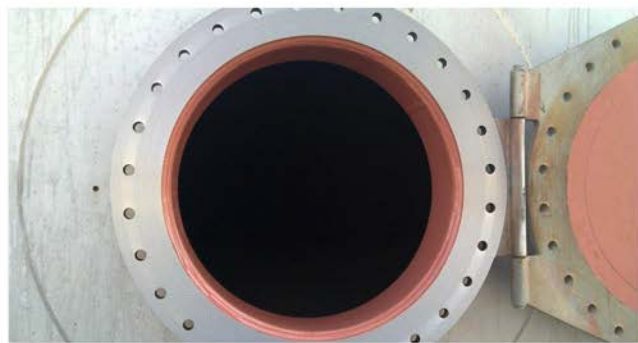
An internally mounted flange facing machine for all types of flange facing, seal groove machining, weld preparation and counter boring.



Pneumatic motor



Servo motor



- **Modular components make setup quick and easy**
- **Latest linear technology—delivering a robust, reliable operation**
- **Three speed continuous feed gearbox, for gramophone finish**
- **Quick set adjustable clamping jaws, minimising set up time**

Technical Details		
Minmum Facing Diameter	160mm (6.3 Inches)	
Maxmum Facing Diameter	864mm (34 Inches)	
Minimum Clamping Diameter	158mm (6.22 Inches)	
Maxmum Clamping Diameter	820mm (32.28 Inches)	
Tool Post Travel	102mm (4.02 Inches)	
Feed Rates(Facing)	0.13 0.16 0.19 0.24 0.38 0.50 (mm/r)	
Feed Rates(Boring)	0.10 0.12 0.14 0.18 0.28 0.36 (mm/r)	
Installation Form	Internal mount. Level & Vertical	
Machining Form	Facing & Boring & RTJ & Groove	
Flatness	<0.1mm	
Roughness	<Ra3.2	
Power	Servo motor / Pneumatic motor	
R.P.M	Servo motor 1.5Kw	0-33rpm
R.P.M	Pneumatic motor 1.7Kw	0-28rpm

